

Everything your school needs to take part in

World Autism Acceptance Month



Interested in fundraising during **World Autism Acceptance Month**?

This short fundraising guide provides you with some colour-themed ideas to help you fundraise.

We appreciate it's always a busy time, but with a bit of planning and some creativity, you can create a simple fundraising activity alongside using your Autism Education Trust school resources.

If you have any questions or would like extra fundraising support, please check out our dedicated [World Autism Acceptance Month website](#) or contact us by emailing fundraising@nas.org.uk

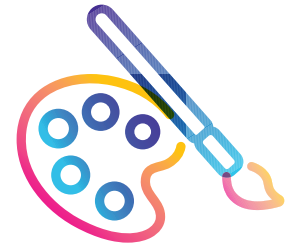
Bright ideas for groups



Rainbow non-school uniform day



Colourful class cake sale



School art exhibition



Spectrum class colour quiz



Bright clothes sale by parents



Class or form colour sweepstake



End of term school colour disco



Colourful music-themed dance marathon



Teacher colour challenge competition set by pupils

Get walking with Team Autism

This month is the biggest event in our charity's year, and we are so thrilled you've joined us to celebrate, fundraise and create a greater acceptance of autism during **World Autism Acceptance Month**.

This year, it's all about walking 5k this April! Why not organise your own school walk? You can find out more [here](#) and we have a dedicated pack and lots of fun [resources](#) to help you get this organised.

Walk to help improve education for young autistic people.

Walk to help improve workplaces for autistic people.

Walk to help reduce loneliness and isolation among autistic people.

Walk to celebrate **Autism Acceptance Month**.

Whatever you are walking for, good luck.

Throughout the month, we'll be sharing stories from across the charity with everyone's celebrations, so be sure to tag your posts with [#SpectrumColourWalk](#), [#WAAM25](#) and [#WorldAutismAcceptanceMonth](#)



Three top tips for reaching your target

- Set an achievable target, let everyone know and use school communications to let people know how you are doing.
- Tell people why you are supporting World Autism Acceptance Month and what the money will do - all this information can be found [here](#).
- Make sure you celebrate your achievement and thank everyone. You may see extra donations come your way too!

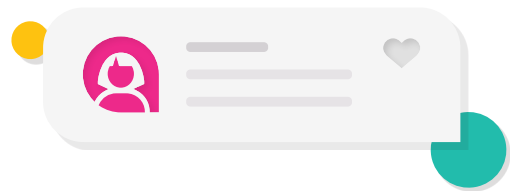
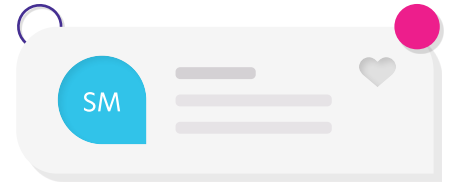
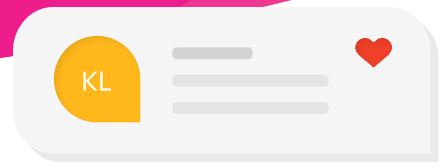


Handy resources for your fundraising

We have lots of handy resources. Please take a look [here](#).

The **impact your fundraising** has on our work

£15 could help provide a safe virtual space for an autistic person through our Online Community.



£50 could help an autistic person overcome isolation, thanks to our branch and social group network.

£150 could help autistic young people thrive in school by funding our campaigning work for better autism training in education.



£500 could help close the employment gap for autistic people by ensuring vital employment advice is available for those looking for work.

How to pay in your fundraising



Once you have collected all the money you have raised, you can donate through the following ways. Please make sure to tell us your name and your reference, which will be in your welcome email.

Your online fundraising page

This year, we've partnered with JustGiving as our online giving platform to make fundraising even easier for you. Any funds raised this way will come automatically to us and you can set your page to run for the length of your activity too.



Pay in or donate online

If you have any off-line donations or want to make a one-off donation, you can donate it online.



By post

Your friends and family may like to give you cash or cheques (which should be made payable to you). At the end of your fundraising, please send one cheque, payable to 'The National Autistic Society' to:

The National Autistic Society, Weston House, 42 Curtain Road, London, EC2A 3NH.

Please do not send cash through the post.



By bank transfer

Account/Business Name: The National Autistic Society
Sort code: 20-00-00
Account number: 70800996



At a Barclays bank

Email fundraising@nas.org.uk to request a paying-in slip, which you can use to pay in the money you've raised at your local branch of Barclays.



To find out more about fundraising as part of **World Autism Acceptance Month**, please head to: <https://waaw.autism.org.uk>

Sponsorship form

Your contribution is hugely valuable to the work we do transforming lives, changing attitudes and creating a society that works for autistic people. Thank you for your support.

World Autism Acceptance Month

April 2025

Fundraiser's details

Title..... First name I'm being sponsored to.....
 Surname.....Postcode
 Address..... When.....
 Where.....

giftaid it

Title	Name (please use full first and last names)	Home address	Post code	Amount sponsored	Amount received	Gift aid*	Date

Grand total: £

* Yes, I am a UK taxpayer, and I wish the National Autistic Society to claim Gift Aid on all future donations and any made in the past four years to this date until I notify you otherwise.
 I confirm that I am a UK taxpayer and understand that Gift Aid is reclaimed by the charity from the tax I pay, currently 25p for each £1 given, and that if I pay less Income Tax and/or Capital Gains Tax than the amount of Gift Aid claimed on all my donations in that tax year, it is my responsibility to pay any difference.
 Please notify the charity if you want to cancel this declaration, change your name or full address, or no longer pay sufficient tax on your Income or Capital Gains.

Sponsorship form

World Autism Acceptance Month

April 2025

giftaid it

Title	Name (please use full first and last names)	Home address	Post code	Amount sponsored	Amount received	Gift aid*	Date

*** Yes, I am a UK taxpayer, and I wish the National Autistic Society to claim Gift Aid on all future donations and any made in the past four years to this date until I notify you otherwise.**

I confirm that I am a UK taxpayer and understand that Gift Aid is reclaimed by the charity from the tax I pay, currently 25p for each £1 given, and that if I pay less Income Tax and/or Capital Gains Tax than the amount of Gift Aid claimed on all my donations in that tax year, it is my responsibility to pay any difference. Please notify the charity if you want to cancel this declaration, change your name or full address, or no longer pay sufficient tax on your Income or Capital Gains.

Marketing preferences

The National Autistic Society would like to keep in touch with you about our services, support, events, campaigns and fundraising. We'll only contact you in the ways you want, and we'll keep your data safe.

See www.autism.org.uk/privacy-notice for further details.

I agree to the National Autistic Society contacting

National Autistic Society is a charity registered in England and Wales (269425) and in Scotland (SC039427)

me in the following ways:

- Post
 Email
 Telephone
 SMS text

(Please tick the appropriate box or boxes to ensure we can contact you)

If you would like to update your permissions at any time, you can contact us on **0808 800 1050** or at supportercare@nas.org.uk.

Thank you so much for contributing towards the work we do. With your support, we'll be able to transform more lives, change more attitudes and create a society that works for autistic people.

The grand total is: £

How to send us the money you've raised:

- Fundraisers can send donations, ideally by cheque, along with your sponsorship form, to **Supporter Care Team, The National Autistic Society, 42 Curtain Road, London EC2A 3NH.**
- All cheques and/or postal orders should be made payable to **'The National Autistic Society'**.
- Please don't send cash in the post, as it's not safe.